



Helpful Measuring Guide

This helpful measuring guide will give you step-by-step instructions on how to measure & create a floor plan of you project space. This information will help our designers with everything they need to assist you in the design of your project.

Items Needed:



This Guide



Pen or Pencil



Measuring Tape

PLEASE PRINT AS CLEAR AS POSSIBLE

Name:

Email:

Selected Door/Finish:

Phone:

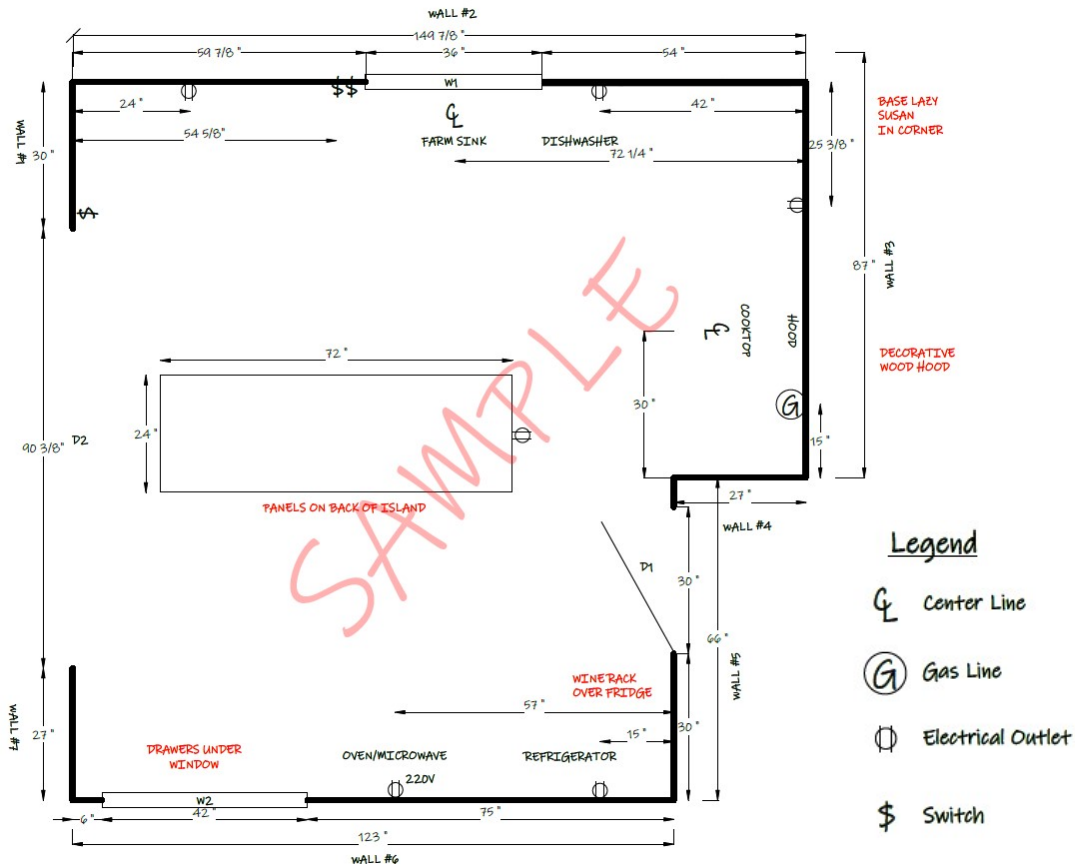
Address:

City:

State:

Zip Code:

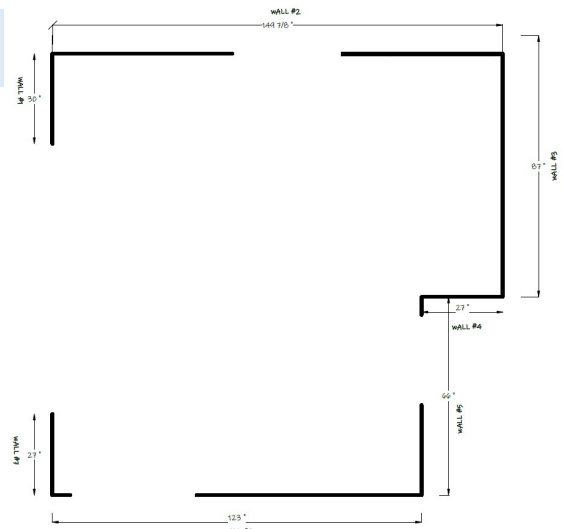
Please use the sample below for reference while creating your project floor plan.



STEP 1: Measure Your Space

- Draw an overhead wall layout of the project space on the supplied "Design Grid" located on the last page of this Measuring Guide.
- Starting in the left corner, measure each wall in the space that will contain cabinets. Record the measurements (in inches) parallel to the measured wall.
- Be sure to number each wall on your drawing (For Reference)

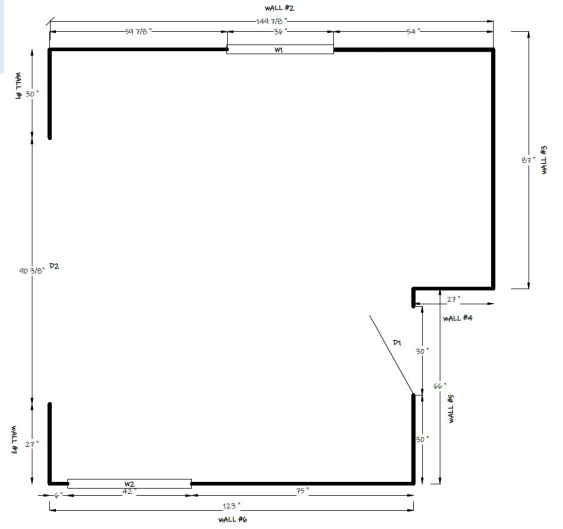
PRO TIP *Be sure to measure & record the full wall length.*



STEP 2: Windows, Doors, & Openings

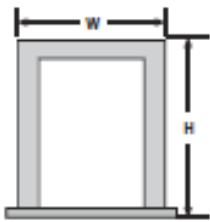
- Draw & measure windows, doors, and any room openings
- Record & number each window, door, & room opening on the "Design Grid"
- Record the measured dimensions on the chart below.

PRO TIP *Always measure windows, doors, & openings from the outside of trim/casing*



Windows Measurements

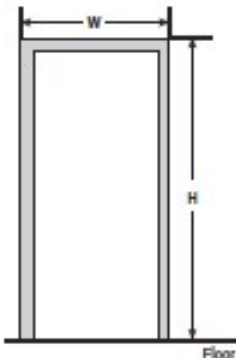
*Label on "Design Grid" using numbers below



| Window | Width | Height | Floor to Bottom | Notes: |
|--------|-------|--------|-----------------|--------|
| W1 | | | | |
| W2 | | | | |
| W3 | | | | |
| W4 | | | | |

Door/Opening Measurements

*Label on "Design Grid" using numbers below



| Door or Opening | Width | Height | Notes: |
|-----------------|-------|--------|--------|
| D1 | | | |
| D2 | | | |
| D3 | | | |
| D4 | | | |

STEP 3: Obstacles

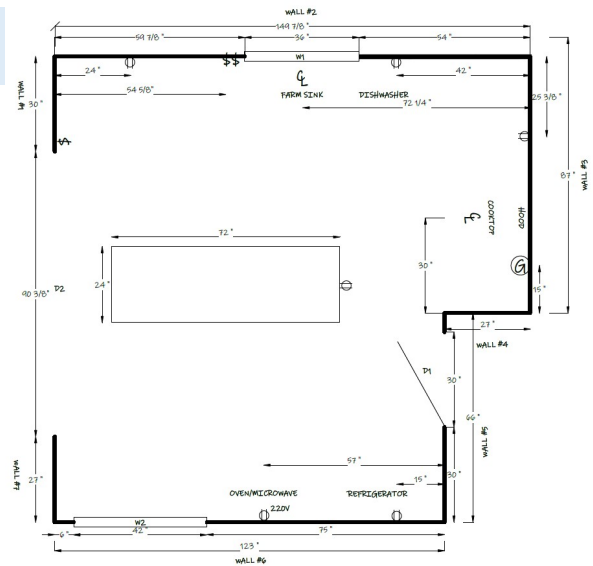
- Locate & measure obstacles such as outlets, switches, vents, pipes, gas lines, radiators, ect.
- Record any islands that you wish to add or already have.
- Record & number each obstacle on the grid

PRO TIP

Be sure to note from which direction the location measures are taken on the chart below.

Obstacle Measurements

*Label on "Design Grid" using numbers below



| Window | Width | Height | Location | From Right or Left | Floor to Bottom | Notes: |
|--------|-------|--------|----------|--------------------|-----------------|--------|
| A | | | | | | |
| B | | | | | | |
| C | | | | | | |
| D | | | | | | |
| E | | | | | | |
| F | | | | | | |
| G | | | | | | |
| H | | | | | | |

STEP 4: Appliances

Send manufacturer spec sheets & installation guides, if possible.

PRO TIP

- Most common appliances come in standard sizes; however, it is important that we have the measurements.
- Higher end Luxury appliances such as range hoods, warming drawers, & wine chillers have dimensions that can vary greatly.

| Window | Width | Height | Depth | Brand | Model # | Notes: |
|--------------|-------|--------|-------|-------|---------|--------|
| RANGE | | | | | | |
| MICROWAVE | | | | | | |
| REFRIGERATOR | | | | | | |
| DISHWASHER | | | | | | |
| COOKTOP | | | | | | |
| OVEN | | | | | | |
| HOOD | | | | | | |
| OTHER | | | | | | |

STEP 5: Elevations

It is very important to take accurate ceiling height measurements. These measurements determine which wall cabinets & crown moulding combinations can be used on your project. Take several measurements as the height can vary in different spots of the room. Some homes may have soffits above the wall cabinet that need to be taken into consideration when creating your design.

PRO TIP

Measure height in 3 locations & record the shortest dimension.

A = Ceiling Height

Ceiling Height: _____

Soffits (area between the top of the wall cabinet & the ceiling)

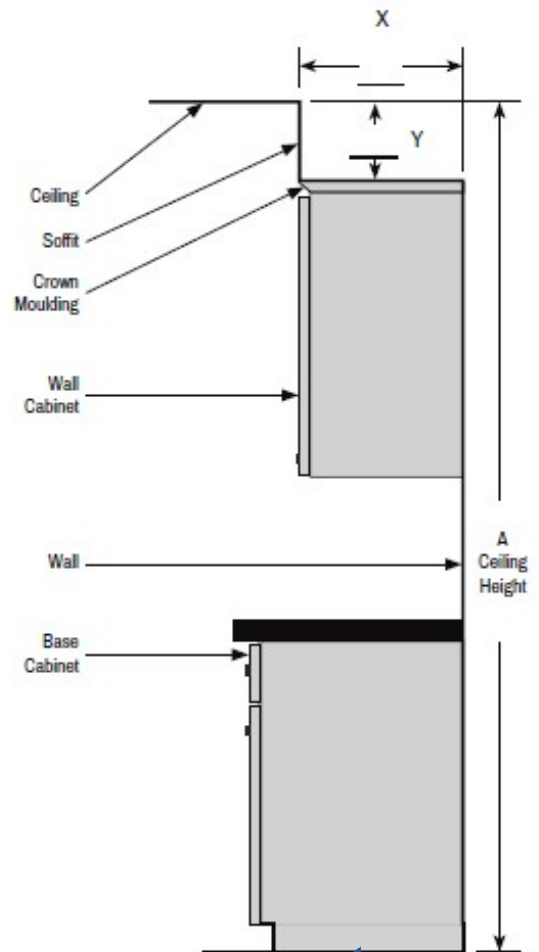
Does the room have soffits?

If yes, please record measurements for **X** & **Y** in the diagram to the right.

Yes No

Do you plan to keep the soffits?

Yes No



STEP 6: Accessories

Be sure to mark where any accessories should be located on your plan.

PRO TIP

Please check any accessory items that you are interested in adding:

- | | | | |
|---|---|---|---|
| <input type="checkbox"/> Base Molding | <input type="checkbox"/> Trash Pullout | <input type="checkbox"/> Lazy Susan | <input type="checkbox"/> Wood Hood |
| <input type="checkbox"/> Crown Molding | <input type="checkbox"/> Roll out trays | <input type="checkbox"/> Glass Doors | <input type="checkbox"/> Microwave Base Cabinet |
| <input type="checkbox"/> Ceiling Crown | <input type="checkbox"/> Spice pull out | <input type="checkbox"/> Wine Storage | <input type="checkbox"/> Microwave Wall Cabinet |
| <input type="checkbox"/> Light Rail Molding | <input type="checkbox"/> Cutlery Drawer | <input type="checkbox"/> Tray Divider | <input type="checkbox"/> Plate Rack |
| <input type="checkbox"/> Paneled Ends | <input type="checkbox"/> Open Shelves | <input type="checkbox"/> Floating Shelves | <input type="checkbox"/> Peg Drawer Organizer |

STEP 7: Photos

Once you have completed your guide, take some photos of your project space. Make sure to include pictures of each wall that will contain cabinets.

Include photos of any obstacles that may have been difficult to draw on your plan.

PRO TIP

Submit Online: Click on "Start Your Free Design" on our homepage. Fill out the form & attach the measuring guide with pictures.

We appreciate the time taken to complete your measuring guide. A design team member will contact you within 24 hours with any questions. Then your design & quote will be emailed to you within 48 hours.

Floor Plan Design Grid

Use the grid below to draw your project Floor Plan. Follow the step in the guide to complete the drawing.

- Step 1: Measure your space
- Step 2: Windows, Doors, & Openings
- Step 3: Obstacles
- Step 4: Appliances
- Step 5: Elevations
- Step 6: Accessories
- Step 7: Photos
- Step 8: Submit

Be sure to draw your floor plan as it will be when your project is complete.

PRO TIP

NOTE: Each small square is 3" x 3"

